

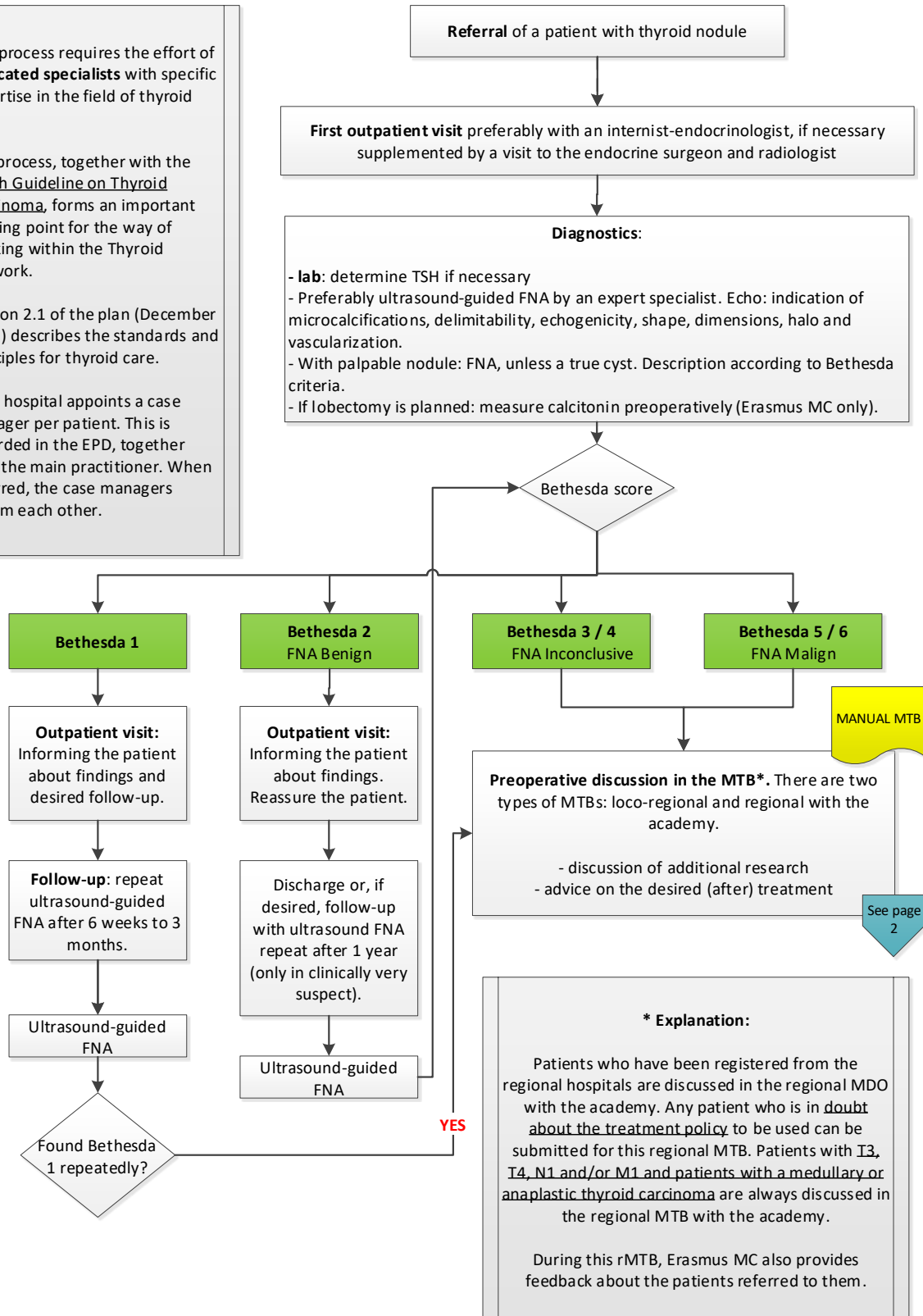
## Care Pathway Thyroid Nodule

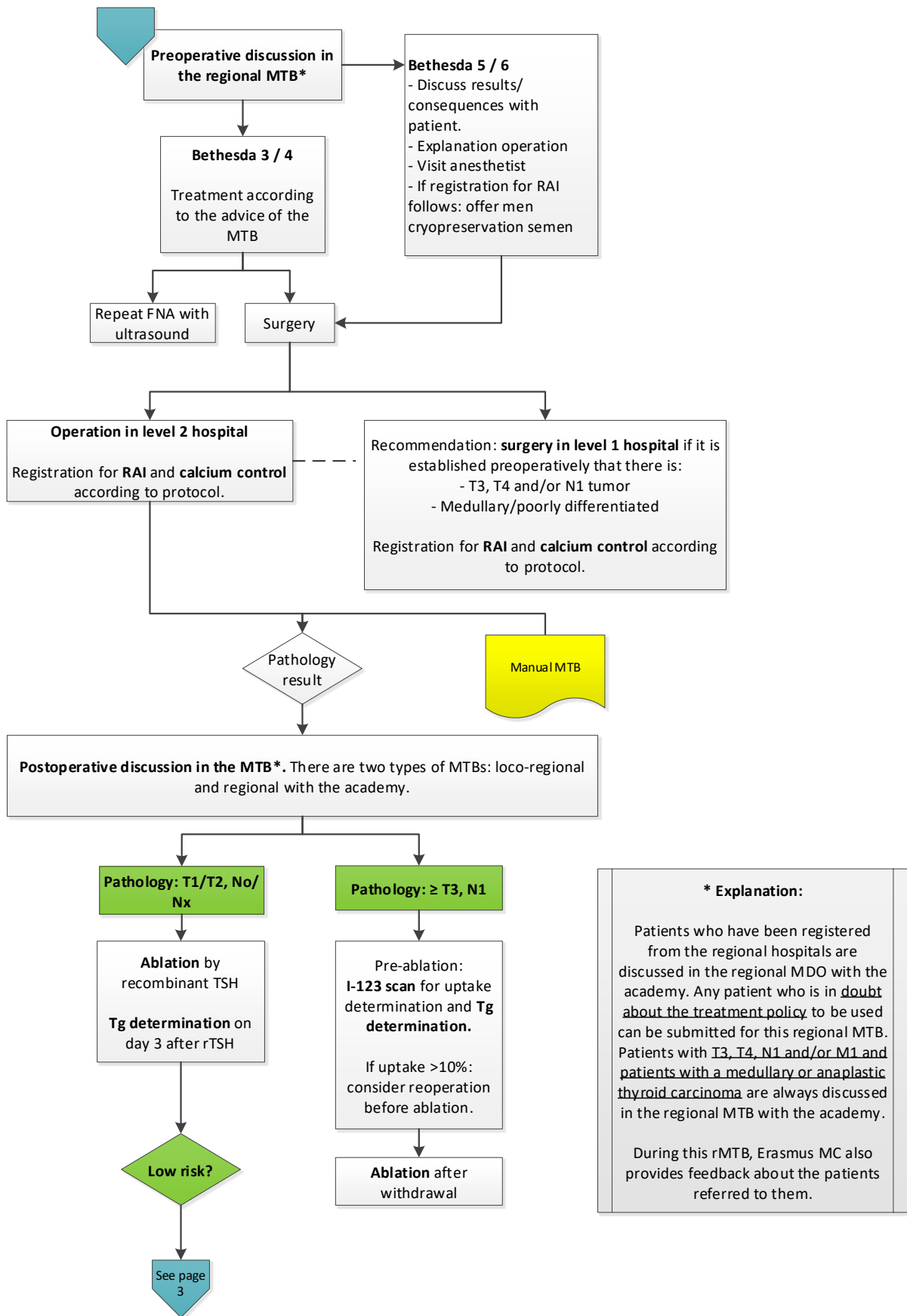
This process requires the effort of **dedicated specialists** with specific expertise in the field of thyroid care.

The process, together with the Dutch Guideline on Thyroid Carcinoma, forms an important starting point for the way of working within the Thyroid Network.

Section 2.1 of the plan (December 2015) describes the standards and principles for thyroid care.

Each hospital appoints a case manager per patient. This is recorded in the EPD, together with the main practitioner. When referred, the case managers inform each other.

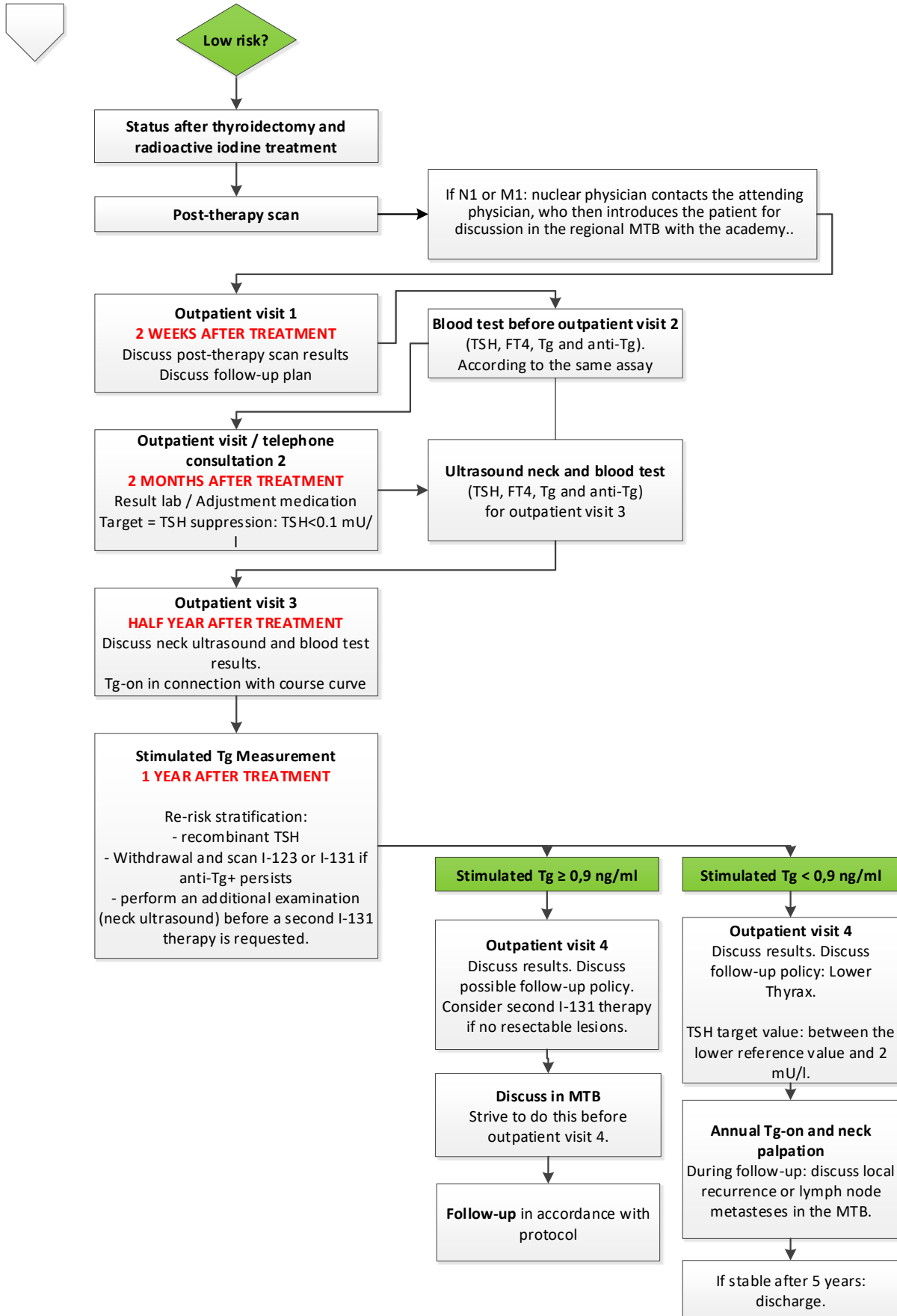




**\* Explanation:**

Patients who have been registered from the regional hospitals are discussed in the regional MDO with the academy. Any patient who is in doubt about the treatment policy to be used can be submitted for this regional MTB. Patients with T3, T4, N1 and/or M1 and patients with a medullary or anaplastic thyroid carcinoma are always discussed in the regional MTB with the academy.

During this rMTB, Erasmus MC also provides feedback about the patients referred to them.



## Disclaimer

This care pathway originates from the Thyroid Network in the Southwest Netherlands region. Each hospital is itself responsible for the quality and efficiency of the thyroid care as provided by their professionals to the patient. Although the professionals involved in the Thyroid Network do their best to provide all information, including this care pathway, as good and error-free to third parties for information, they cannot be held responsible for any errors or for keeping the care pathway 'up-to-date'. The Thyroid Network therefore waives any liability whatsoever, within the limits of Dutch law.